



The BARTON *Miller*

July 2025



Originating from & produced by St Mary's Church Barton Mills

July 2025

Editors	Frances Lewis frances_lewis11@hotmail.com Nancy Higgins nancy@bartonmills.com	11 Church Meadow	Tel 713155
Compositor/Cover	Nancy Higgins	67 Church Meadow	Tel: 515215
Duplicating	Frances Lewis	11 Church Meadow	Tel: 713155
Duplicating / Collating Reserve	Lindsay Judd	2A Church Lane	Tel: 715837
Collating	Karen Colasante	23 Church Lane	Tel: 713258
Collating Assistant	Lynn Elkington	13 Wiggin Close	Tel 715936
Distribution	Liz Jarvis and the House to House Delivery Team	Flint House 1 Church Lane	Tel 583728
Accounts	Tony Potts	3 Chestnut Close	07979781497

Dear Readers,

As I write this, it is the longest day and so far, the hottest this year. Although I like the hot weather, on days like these, I don't mind being indoors, out of the heat. I therefore have time to complete my compositing role for the village magazine. Do you like the heat? Are you taking steps to stay in the shade and stay hydrated?

We have our usual and other contributors in this month's magazine, with the addition of advertising for Bellfest (see page 8) and a date for your diary to get your entries ready for the Gardening Club's Annual Horticultural Show at the end of August (see page 17). Both these events are open to the public and would appreciate your support.

Copy for the double Aug/Sep issue of the Barton Miller by 20th July, please.

Best wishes from the Editors, Nancy Higgins and Frances Lewis.

BURY ST EDMUNDS MOBILE LIBRARY VAN DATES (Route 4)

Email: help@suffolklibraries.co.uk Telephone: 01473 584563

The Library Van visits Barton Mills (Lamb Court) on Saturday aft. **12.15pm -12.40pm**

This will be the following Saturdays - 19th July 2025 and 16th August 2025.



Article for July 2018 – Barton Miller

Hatched, Matched and Dispatched.

That's the language that was used by clergy when I was ordained thirty years ago to describe the services of Christening, Marriage and Funerals – and what we now call "Life Events".

All cultures and societies have rites of passage at key moments of transition and change, and of course, for a traditionally Christian country like the UK, ours have usually involved the church. These services have always been an important part of my ministry. It is such a privilege to be involved at a key moment for individuals, couples and families.

Contrary to common belief, you don't need to be religious or a regular churchgoer to have these services at your local church.

Alongside the traditional service of Baptism, we also have a service called "Blessing of a Child" which is a joyful celebration of the birth of a child, written for those who want to mark the amazing gift of a new child but don't feel ready to make Christian commitments. I have done many of these alongside Baptisms. Weddings are open to anyone who has a connection with the parish (there are some legalities, but I won't bore with details), and we are able to shape the service in a way in quite creative ways. For example, in one service there were no hymns and the congregation danced in the middle of the service to the Foo Fighters!

Renewal of wedding vows can be simple or elaborate, based on a couples' preferences.

And lastly funerals. During the pandemic, when there were so many restrictions, I saw how important family and friends gathering to celebrate and mourn is – because it had become unable to do properly. Again, Funerals led by the Vicar or in Church don't have to be heavily religious – I've been to services led by Civil Celebrants more 'religious' than those I conduct.

Why do I do this? Surely as a Christian Pastor, I should only be conducting these events for congregation and those who already have a deep Christian faith.

Firstly, I do it because, I really am the Vicar for the whole community and not just those who attend church. Second (as I said above) it is privilege to be involved in important moments in people's lives. And lastly, because I want to model the welcome Jesus gave – open and generous.

I hope that however you connect with us you find the same welcome. And why not use us to assist you as you celebrate the important moments in your life.

Mark McCaghrey

St Mary's Church Barton Mills.

Church Contact: Team Vicar, Revd Mark McCaghrey,
1 The Street, Barton Mills IP28 6AP
Tel. No. 01638 495001

E mail mark.larkandlee@outlook.com

Church Representatives:

Churchwardens: Dave Traher 25 Church Lane Close, Barton Mills. Tel 718328; Jenny Everett 24 Oxford Close, Mildenhall IP28 7RP, Tel 07807 912909.

Elders: Glynn East and Dave Traher.

St Mary's Parochial Church Council

Secretary: Nancy Higgins, 67 Church Meadow, Barton Mills, IP28 6AR. Email - nancy@bartonmills.com

To whom all correspondence should be addressed.

Elected Members

Treasurer: Jo Traher

Deanery Synod Representatives:

Peter Alder and Glynn East

Other PCC Members : Alan Butcher, Linda Jenkins, Rodney Knight, Frances Lewis, and Sandra Woollard.

Prayer Chain - There is access to a prayer chain for anyone needing prayers for themselves or others. Please contact the church Elders mentioned above



COFFEE MORNINGS

**EVERY THURSDAY 10.00 TO NOON IN
THE CHURCH ROOM**



ALL VERY WELCOME



BARTON MILLS AND GROUP CHURCH SERVICES

JULY 2025

Sunday 6th July

9.30am Holy Communion

Sunday 13th July

9.30am Sunday Celebration

5pm Service of Prayer for Healing

Sunday 20th July

9.30am Holy Communion

Sunday 27th July

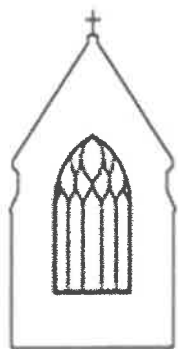
9.30am Morning Worship

Sunday 3rd August

9.30am Holy Communion

All are welcome to join us at these Services





Dear Villagers,

The Preservation Trust committee would like to thank Nigel Curtis, Keith Fuller and Andy Orr for assisting us with managing the parking for the latest Car Boot on our village playing field. This was our last event as the PCT and raised £409.00. The PCT is now closed.

We hope you will continue to help in the upkeep of the church building. Perhaps you have a good idea for a fundraising event, or a skill in creating website content? Are you an avid fan of social media? We would love to know if anyone out there could bring new energy to the cause by joining the

Friends of St Mary's Barton Mills

It is free to join as a supporter so please contact:

Mark McCaghrey on mark.larkandlee@outlook.com

or

Liz Jarvis on emjarvis68@gmail.com

or

pick up a leaflet from the church porch

? BARTON MILLS VILLAGE HALL QUIZ?

FRIDAY QUIZ 18th JULY (sold out)

AND

SATURDAY QUIZ 19th JULY (spaces)

in BARTON MILLS VILLAGE HALL

QUIZMASTER: KEVIN MILLIGAN

FRIDAY & SATURDAY QUIZ

7pm FISH & CHIP SUPPER from Handy Plaice

8pm start of QUIZ

Kevin Milligan will be the Quizmaster on both evenings (but with different questions each time)

When you book, please say which evening you have chosen.

Come as a team (up to 8 people) or come on your own – teams can be made up on the night.

RAFFLE PRIZES B.Y.O. DRINKS & TABLEWARE

Tickets: £15 per person, before the night, to include FISH (or CHICKEN or VEGGIE) & CHIP SUPPER. Gifts of raffle prizes will be very welcome

Tickets from: Frances Lewis, 11 Church Meadow, Barton Mills,
(01638 713155) e mail: frances_lewis11@hotmail.com

Proceeds to Barton Mills Village Hall Funds.

BARTON MILLS BELLFEST

(4TH YEAR RUNNING!)

Raising funds for East Anglian Air Ambulance

Barton Mills Bell Pub (Beer Garden)

(BELL LANE, BARTON MILLS IP28 6AJ)

Saturday 19th July 2025

2.30pm to Midnight (FREE ENTRY)

LIVE MUSIC (INCLUDING KARAOKE & DJ)

- TRACEY MOOREHOUSE / JACEN BRUCE
- LITTLE BIT COUNTRY / SOLID STATE
- STOCKPILE

LICENCED BAR

"HOTACO FOOD TRUCK"



BARTON MILLS BAPTIST CHURCH



It's hard to believe we are **almost half-way through the year** and that we will shortly reach the longest day. I put it down to the fact that we are **constantly referring to our diaries and looking forward** to future events. Maybe we're planning holidays to get away from it all - whatever the case we are looking forward and not looking back.

Sports Day at the Manor was always an exciting event for Barton Mills youngsters to take part in. At the age of 5, I was entered in the running race and well ahead of my fellow competitors, however, I decided to turn round and wait for my friends to catch me up. Need I say more! If I hadn't looked back I would have easily won the race! I have been reminded many times since that day the importance of looking ahead and pressing on to the end.

We are in a race of life and we hit many walls of pain, loneliness, abuse, hopelessness and sadness, but if we, like Paul tells us in Hebrews 12 v 1 & 2...**"run with patience the race that is set before us, looking unto Jesus"**, we shall overcome. When life's race gets you down, remember the greatest incentive you have as a Christian is awaiting you at the finish line - seeing Christ face-to face and sharing in His eternal glory! Running the Christian race is not always easy. Huge obstacles may confront us as we continue on the course God has marked out, but if we keep our eyes on the goal, by **"looking unto Jesus"**, we shall ultimately overcome and gain the victory. Let us ask the Lord to give us patience as we run this race of life. May we fix our eyes on the eternal goals set before us and stay focused on the Lord Jesus Christ, He will sustain us. Let's give our full concentration and dedication to the race.

**We must fix our eyes on Jesus if we're going to win the race
Pressing on toward godly living, trusting in His grace.**

We warmly invite you to the Baptist Chapel in Barton Mill Street:
Sundays at 3 p.m.

Also we are willing to visit you to discuss Spiritual Questions or Pray with you,
01638 713892, sweetarrpeace@yahoo.co.uk

F. A. RUTTERFORD

BARTON MILLS PARISH COUNCIL

PLAYGROUND EQUIPMENT

Last month we informed the local community of the kind offer we had received to finance an additional piece of equipment for the play area on the village green. We have had a suggestion for a larger slide with a mound. Before we look into this further with costs, on-going maintenance and insurance issues, we wanted to give parishioners a bit more time to put their thoughts together and let us know. Please contact the Clerk using the details below with your views.

VILLAGE SIGNAGE

We are also interested in your thoughts about the Barton Mills signage at the entry point to the village. These are plain but functional. You will note on your travels that many other villages have much newer signage or are highlighted with white village gateways/ fencing to make them more visible and welcoming. We welcome your views on what you would like to see in the village and we would ask you to send your suggestions to the Clerk using the details below.

The next Parish Council meetings will be held on **Tuesday 1st July and Tuesday 2nd September, starting at 7:30pm** in the Village Hall. In the event of an extraordinary meeting being held before the next scheduled meeting, it will be published on the website and notice boards. The Public are welcome to attend Parish Council Meetings and will be offered the opportunity to speak at the relevant item. To raise an item at any meeting please contact the Clerk at least 7 days prior to the meeting date.

For any issues please contact:

Clerk: Naomi Alecock, clerk@bartonmills-pc.gov.uk

Website: www.bartonmills-pc.gov.uk and Facebook: Barton Mills Parish Council

BARTON MILLS 100 CLUB

The purpose of the Barton Mills 100 Club is to raise funds by operation of lotteries and draws to contribute to projects and/or organisations within the parish of Barton Mills for the general benefit of the people of Barton Mills. **If you are a village organisation who would benefit from a 100 Club financial grant, please do speak to Jackie Stirges - jackstirges@btinternet.com**

June 2025

£30	A. Lowe	Half Year Extra Prize £150
£20	F. Lewis	
£10	A. Stower	M. Spurling
£10	J. Cockett	

If you would like to become a member please contact our Treasurer: Janette Miller - 49 The Street. Tel 712843

IF YOU WANT TO WIN, YOU HAVE TO BE IN !!

Prizes of £30, £20, and 2 x £10 monthly and twice a year additional prizes of £150.



MILDENHALL & DISTRICT MUSEUM AND MUSEUM SOCIETY

The Museum is OPEN.

**Tuesday, Wednesday, Thursday, and Saturday 2 -4 pm;
Friday 10.30 - 4pm**

MILDENHALL MUSEUM SOCIETY

Upcoming Society Talks:-

Thursday 3rd July 2025 - Peter Hiatt -

My Life As A Newmarket Farrier

There is no meeting in August

In the Museum there is a temporary display, until the end of August, to celebrate VE day and VJ day, with a film showing alongside the exhibit which has examples of rationing and wartime posters on display.

Talks are held at the Museum 7.30 pm, refreshments available.

Members £2 non-members £4 Annual Membership £10

Mildenhall Museum is a registered charity and relies totally on your donations.





Barton Mills & District Gardening Club

MEMBER OF R.H.S.

Annual Subscription £15.00

£2.00 fee per meeting for members

New members and friends welcome as paying visitors

Tuesday 22nd July 2025. 7.30pm.

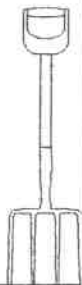
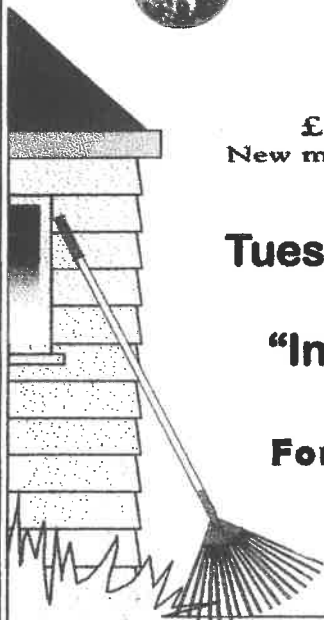
Gwenda Kyd -

"Incredible and edible plants"

For more information contact -

Secretary - Zoë Morris

01638 482986.



All over 50s Welcome BARTON MILLS WEDNESDAY CLUB

WEDNESDAY 2nd July. 2 pm. In the Village Hall.-
STEPHEN POULTNER will present PART II of his talk on
LOST SUFFOLK HERITAGE

Refreshments afterwards



Wednesday 16th July, Members' Summer Lunch Party
PLEASE CONTACT ANN JACOBS TEL 510008 for details.

Entry £2 members £3 non members
Annual subscription £10 payable in January
Enquiries to Ann on 01638 510008 or
jacobs.family@me.com



Good Neighbour Scheme - July 2025

On the Fourth of July our neighbours from the United States of America will be celebrating the 249th year since the independence of North America in 1776. Here in East Anglia and especially here in our village, we have many wonderful members, or former members, of the United States Air Force and their families with whom good and lasting friendships have developed.

Independence in our lives is something that we all hope to enjoy for as long as we are able to do so. But sometimes that independence needs a little boost insofar as aspects of life such as isolation, less mobility or infirmity, to highlight just a few, can impede that independence. We, the Volunteers of the Good Neighbour Scheme, offer help in a number of ways that can make that little difference to some people's lives, especially through calling in for chats and befriending.

We are able to network with other support groups and organisations to seek assistance for those needing it where our own volunteers are unable to provide that help and have even managed to do that for people outside of our parish where there is no Good Neighbour Scheme in operation.

Our advert in this magazine sets out the areas of help that we can offer so do please read the advert and let us know if we might be able to help. Our volunteers are keen to assist where they can and wait for your call.

Please remember that you can contact us on **07419 211040**.

Barton Mills Ladies Club

Barton Mills Ladies' Club held their AGM at their meeting on June 10th . We did not have a Speaker and after our club business, we enjoyed an afternoon tea.

Our next meeting is on Tuesday, 8th July, when our Speaker, Sarah Doig will tell us about the A - Z of Curious Suffolk. The meeting starts at 2pm in Barton Mills Village Hall.

Why not join us to find out what these curious things might be?

MISSING CAT

Are you missing a mature short haired predominantly white male cat with dark grey patches and a few ginger sprinkles?

Very sadly he was knocked over by a young lady driving through the village on Sunday 15 June and he did not survive. Various homes at the Bull Inn end of The Street were visited to find his owner as he was frequently seen nearby, but no-one claimed him. On the Monday puss was taken to Aquarius Veterinary Centre in Mildenhall but there was no microchip.



Free help when you need it most

Including

Minor Household Repairs & Assistance,
Shopping, Garden Tidying, Help with Pets,
Form Filling, Technical Help (Computers, Phones, TVs, etc.),
Emergency Meals or just a Chat

Call us on 07419 211040

BARTON MILLS GOOD NEIGHBOURS

Why not Volunteer or become a Friend of the Scheme?

Phone us for details or e-mail us at

barton.neighbours@gmail.com



**Mildenhall & District
1945**

Shared Moments Of Celebration

**Exhibition running until the end of August.
Includes a film**

**See what rations looked like!
See p.11 for Museum Opening Times.**

MILDENHALL BANKING HUB

The temporary banking hub in Mildenhall, in The Pavilion, Recreation Way, (by the big council car park) is open between 9am and 5pm from Monday to Friday. It offers a counter service operated by Cash Access UK. Its services are operated by the Post Office, so that customers of all major banks can carry out regular cash transactions.

The hub also offers a community banker service where customers can talk to their own bank about more complicated issues on the day their bank is in the hub which is as follows:

Monday: Barclays
Tuesday: NatWest
Wednesday: Lloyds
Thursday: Santander (pm only)
Friday: HSBC

BARTON MILLS and DISTRICT GARDENING CLUB



**SATURDAY 30th August 2025
in the VILLAGE HALL at 2.00 pm**

**There are categories for Vegetables, Fruits,
Flowers, Baking & Jams,
which children can also enter.**

**ENTRIES ARE INVITED FROM MEMBERS
and EVERYONE IN THE AREA.**

Anyone interested in entering please contact:
Graham Swift on 07775 673366 or
email: grahamswifty32@gmail.com
for schedules, recipes and entry forms.

Entry to the show is £1 for adults, children are free.

Visit Barton Mills & District Gardening Club Facebook group
for up to date information on the show.

NATURE NOTES

We have just returned from our third visit to Llandovery in South Wales. The owners of a small wood agreed to let us erect some bird nest boxes with a view to attracting Pied Flycatchers. I'm pleased to report that this year, out of 32 boxes, five were occupied by flycatcher pairs, that raised broods of chicks successfully. According to local ornithologists 2025 has been the best year for the species since 2019. This was partly due to the very warm early spring, with migrant birds arriving much sooner than usual and a distinct lack of rainfall! We don't usually think of Wales suffering from a lack of rain, but this year South Wales suffered a three month drought, just as we did in East Anglia.

One of our favourite sites is the Llyn Brianne reservoir, which is a short drive from Llandovery. Constructed in the late 1960s and early 1970s, it holds 64 million cubic metres of water and is fed by the River Towy. The dam is the tallest in the UK, rising to 91 metres (300 ft). This area is a haven for wildlife and a popular tourist site. This year, the Wheatears seemed to be particularly abundant. We found several pairs nesting among the rocks on top of the dam. What was most noticeable, was that the water level this year, was about twenty feet lower than last year, no doubt due to the lack of rain.

Wales is generally much wetter than East Anglia, due to the prevailing south-westerly winds bringing in rain from the Atlantic. By the time these winds reach us most of the rain has fallen, so we often suffer a shortage of rain. As the land dries out and winds increase, we experience dust storms, known locally as 'Fen Blow'. Water is essential to all life. However, water is not the only factor that makes such a difference between the wildlife found in Wales, from that found in East Anglia.

The Welsh terrain is obviously mountainous, whereas ours is flat. This impacts the type of agriculture that can be practised. With many fields too steep for heavy machinery, the focus turns to livestock. Some arable farming takes place in the more flat river valleys, of course. Cattle and sheep graze the extensive hillside meadows. This low intensity type of farming means that wildlife can thrive in conjunction with agriculture. Wild flowers flourish with a consequent

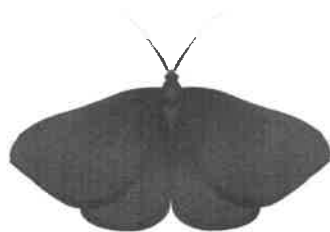
abundance of insect pollinators which are, in turn, food for other creatures. You may not be fond of flies but there was no shortage of them where we stayed! Willow warblers are still common in the region largely, I think to the availability of insect food, whereas this species is now quite scarce in Suffolk.

On our return journey we visited a National Trust property called Croft Castle, near Leominster, in Herefordshire. This site is set in parkland with extensive wildflower meadows, grazed by sheep and cattle. To reinforce what I said about insects, flies were noticeable, but we were also thrilled to see lots of Spotted Flycatchers and Common Redstarts, species which are also increasingly hard to see locally. It was a pleasure to stand still for ten minutes to watch a Spotted Flycatcher sallying forth from its perch on a dead tree to pluck insects from the air.

Back to Suffolk and there is still plenty to see at home. July is a good month to see some of our day-flying moths. There are probably about a dozen or so species, fairly easy to find. The caterpillars of the Cinnabar moth, feed on Ragwort; the adult moths are a striking black and pinkish red with two pink spots on the wing. The similar Six-spot Burnet moth is mainly black with six red spots on each wing. Another day flier is the Chimney Sweeper; as its name suggests, it is largely black but for delicate white fringes at the edges of the forewings. The fourth one to look out for is the Forester moth. It has a rich green sheen to its wings and obvious long black antennae.

If you have a ditch or pond nearby you may find some interesting wild flowers – Meadowsweet with its white, fluffy, sweet-smelling flower heads and Hemp agrimony with its flat, pink flowers should both be seen about now. Purple loosestrife will also put in an appearance with its tall, purple flower spikes. These are just a few but many others are there if you take the time to look for them. Go out and enjoy some native wild flowers!

Ken Venus.



CLUB NEWS

KNIT and NATTER GROUP

The Knit and Natter Group would like to thank everyone for their help and support at the coffee morning on Saturday 24th May.

Our recent fund raising events, starting with the Easter raffle, then the car boot, and including funds raised from attendance on Wednesday afternoons, have, in all, raised **£810**. This will be split between the two charities St Nicholas Hospice and Meseret, supporting babies and Mums in Ethiopia. This is a great total from an amazing effort.

The Group meets in the church room every Wednesday afternoon between 2pm and 4pm. It is a very friendly group with a range of knitting styles or no knitting at all - just nattering ... All welcome!

Alison Swift 07982679926.

SOCIAL ART GROUP

The Barton Mills Art Club continues to meet each Friday in the Church Room from 7pm to around 9pm. We are a small group just trying our hand at drawing and painting using different media. It is a low-key and sociable evening and new members, even those new to the Art world, will be very welcome. If this would be of interest or you would like some more information, just give me a ring:

Glenda Berrett 01638-717925

BOOK CLUB

We had all read 'The Ghost' by Robert Harris, for our June meeting. The discussion produced a wide variety of opinions! Some found it an easy read, with an interesting mix of a fiction story into real life places and happenings, others felt it to have a slow start and that the story centred too much on politics and thus was rather tedious. But we agreed that we learnt quite a lot about American presidential places!

For our next meeting, in the church room on Thursday 10th July, starting at 7pm, we are reading Miriam Margolyes' autobiography 'This Much is True.' This was a controversial choice of book, so the discussion should be quite lively.

New members of the Club will be very welcome.

Frances Lewis 01638 713155

IMPORTANT NOTICE FOR BARTON MILLER ADVERTISERS

As of the February 2025 edition of the Barton Miller, there will be
NEW advertising rates for commercial/business advertisers

NEW RATES PER ANNUM

FULL PAGE	£180
HALF PAGE	£90
QUARTER PAGE	£45
1/8th PAGE	£25

The rates for clubs/societies will remain unchanged as these have
recently increased.

Please note that adverts will not go to print until fees are paid.

planB
Scaffolding Ltd

01284 811444 / 01638 717294 / 07469 898794

(Office) (Out of Hours) (Glyn)

planbscaffolding@gmail.com

www.planbscaffolding.co.uk

- **Covering a 40-mile radius of Bury St Edmunds**
- **Competitively priced aluminium towers / steel and system scaffolds**
- **Reliable/considerate and efficient Team**

Google
Reviews
5.0 ★★★★★



7/25

Cheese Please



AMERICAN
ASIAGO
BABYBEL
BLUE
BRIE
CHEDDAR
COLBY
COTIJA
COTTAGE
CREAM

EDAM
EMMENTAL
FARMER
FETA
FONTINA
GOAT
GOUDA
GRUYERE
HALLOUMI
HAVARTI

HERVE
JACK
MUNSTER
PANEER
PARMESAN
RICOTTA
ROMANO
STILTON
STRING
SWISS

Oleg Khomych

Building services

07762 423 094

Olegkhomych111@gmail.com

WhatsApp

(+44) 07493 628 149

References are available

Tetiana Khomych

Cleaning services

Khomychtetjana@gmail.com

WhatsApp

(+44) 07719 749 723

References are available

Mr and Mrs Khomych are a couple from Ukraine who now live in Mildenhall. They are looking for work locally.

A decorative border composed of numerous small, stylized pencil icons arranged in a rectangular frame around the central text.

**Copy for the August/September
edition of the Barton Miller to
the Editors
By
20th July please.**

What's on in Freckenham at the village hall

New website [Freckenham Village Hall \(freckenham-pc.gov.uk\)](http://freckenham-pc.gov.uk)

Monday Meet Up at the Village Hall 2 – 3.30pm. Free event but donation appreciated. Sometimes a carpet bowls mat or table tennis table is out for people to have a go.

Coffee Caravan First Tues of the month 1st July, 6th August, East View Car Park, off Mildenhall Rd 2 – 4pm. Cuppa, chat, free advice.

First Friday of Month Film Night 4th July –

A Complete Unknown

Set in the influential New York City music scene of the early 1960s, "A Complete Unknown" follows 19-year-old Minnesota musician Bob Dylan's meteoric rise as a folk singer to concert halls and the top of the charts as his songs and his mystique become a worldwide sensation that culminates in his groundbreaking electric rock-and-roll performance at the Newport Folk Festival in 1965. Doors & Bar 7pm, film 7.30pm. £7 pp with free popcorn.

Then a summer break till 3rd October

Fri 11th July Cash Bingo - Doors and Bar open 7pm, eyes down 7.30pm, £1 a game, £2 entry fee pp for Village Hall funds. Best to book your table on 07542 198 933 DM on Facebook

Open Gardens Sunday 13th July 11-4pm details being finalised look out for more information. In aid of Macmillan and WSH Make a Wish £5 pp. Also a meet the makers & creators many who attend our Farmers Markets at the VH, where parking, refreshments (for VH funds 11 -3pm) and toilets available. Entry to gardens by map available from VH or the open gardens.

Farmers Market on a summer break back 27th Sept.

We are looking to stream an Eastern Angles Show interested?

Let Jane know and keep looking out for more information.

Weekly events **Table Tennis now 7 – 9pm**, dance club will take a summer break and some classes a week off for hols so check on <https://freckenham-pc.gov.uk/>. for more details and to book. events! Follow us on Facebook FreckenhamVH & Freckenham, Suffolk Community Group.

10/25



- For all of your air conditioning and ventilation needs, both domestic & commercial
- Design, supply and installation of most quality brands
- Energy efficient air source heat pumps, ideal for both heating & cooling your home
- All domestic systems are currently charged at 0% vat
- Domestic ventilation & heat recovery systems
- Cellar Cooling

Tel: 01638 716151 / 07970 106446

Email mail@akaircon.com

www.akaircon.com



“Protect your home with confidence and No Monthly Fees!”

Discover the ultimate peace of mind with 3 Alarms Ltd. As a trusted family-run business, we're dedicated to your security. Our grade2 standard smart app alarm system is installed for just £495 + vat, with no ongoing charges.

Say goodbye to monthly fees and hello to total protection

Call now on 01638-711588 or 01223-927279

Visit: www.3alarms.co.uk

09/25



A1 CARS

SUFFOLK (LTD)

1/26

24 hour taxi and
Executive Service
Airport Transfers

book@a1cars.co.uk

www.a1cars.co.uk

01284 766 777

Try our new app

Search A1 Cars Suffolk on the App store or Play Store

MILDENHALL BUTCHERS

09/25

TRADITIONAL FAMILY BUTCHER

TEL 01638-712248
10 HIGH STREET
MILDENHALL
BURY ST EDMUNDS
IP28 7EQ

OPENING TIMES:
MONDAY TO SATURDAY
7.00—5.00PM
SUNDAY: CLOSED

FIND US ON FACEBOOK



LEARN TO DRIVE WITH



"DRIVEWISE"

Your Local Driving School

Alan Chilestone DoT ADI
Pass Plus Instructor

For Friendly, Patient Tuition

With Experienced Instructor



Dual
Controlled Car

Phone Alan
01638 717224 or 07889 600338
www.drivewisesuffolk.com
alanchilestone@hotmail.com

Serving The Area for Over 15 Years

twitter @DrivewiseS

Drivewise Suffolk

11/25



TRUSTY GARDEN CARE

Grass - Hedges - Trees - Landscaping

7/25



07979 225691

trustygardencare@gmail.com

@trustygardencare

Care & management of trees a speciality

SKIP HIRE

FREEDOM RECYCLING LTD—01842-828888

Skips from 4yd to 40 yd
Domestic, Commercial and Industrial

FREEDOM RECYCLING LTD SKIP HIRE

Competitive prices, reliable and friendly service

Licensed waste carrier and Environmental Permit

FREEDOM RECYCLING LTD Tel. 01842-828888

www.freedomrecycling.co.uk

10/25



LESTRANGE CARPENTRY & BUILDING

We can help with all carpentry
and building needs including,
Timber frame and roofing
construction

Jetty construction
Project management

6/25



Spencer Pettitt



07849 740678



lestrangeceb@gmail.com



lestrangecarpentry.co.uk



Barton Mills



Winner of the Institute
of Carpenters Level 3
Apprentice of the
Year Award 2021.

NEWMARKET BRIDGE CLUB

EBU licensed

Thursday evenings 6.45—10.00 p.m.

Above The Stable

65a High St., Newmarket CB8 8NA

(Parking at the rear of the premises off Palace Street)

£3.00pp per evening

Single players can be accommodated but
telephone one of the below first.

Further details from

John Child 07739 097522 or

Carolyn Child 07739 097523

(formerly of Mildenhall Bridge Club)

COME AND JOIN US!

6/25



**Sales, servicing, repairs and sharpening
of all types of garden machinery.**

Collection and delivery available.

Friendly, local and professional service.

C W Kirk Lawnmowers

01638 744349

CWKIRKLAWNMOWERS.CO.UK

44 Newmarket Road
Burwell Cambs
CB25 0AE

Rothwell's Carpet Cleaning

Carpet Cleaning & Stone Floor, Upholstery, Rugs

A few points that make us stand out,

Rothwell's has been in business since 1993

We're an honest local family firm.

Our large truck mounted machines mean
more cleaning & drying power

for the best results possible.

Members of both the NCCA and TACCA.

We will move the furniture.

100% satisfaction or it's FREE.

Call Oliver and Max Campbell

for expert help today.

01638 428 060

www.rothwells.biz

10/25



ATTITUDE DANCERS ACADEMY

BALLET, MODERN AND TAP

DANCE CLASSES

EVERY THURSDAY IN THE

BARTON MILLS VILLAGE HALL.

TEL 07887 653239

www.attitudedancersacademy.co.uk

4/25

2/25

All Tree & Hedge Work Undertaken

Garden/Site Clearance

Stump Removal

Grounds Maintenance

Grass Cutting small/large areas

Tree & Hedge Planting

NPTC Qualified

Fully Insured

07442534712

01638724000

info@thtreesurgery.co.uk

Based in Horningsea & Fordham

TH Tree Surgery
Limited



Rectory Farm, Isleham Road, Worlington, IP28 8SW

www.seedfarmshop.co.uk

01638 354437



SEASONAL PLANTS

COFFEE, TEA AND COLD DRINKS

DELICIOUS LOCALLY MADE CAKE

TOASTED FOCACCIA SANDWICHES

FRESH SOURDOUGH BREAD

LOCALLY SOURCED FOOD AND DRINK



Opening times:

Monday, Wednesday, Thursday, Friday & Saturday

9.30am - 4.30pm

Sunday 10am - 4pm

Closed on Tuesdays



6/25



6/25

ATC AUTOTECH

ANDY COLE IS A REGISTERED CAR & MOTORCYCLE MOT TESTER

**Over 30 years of experience in
Car servicing, Repairs & Diagnostics**

covering

Barton Mills, Mildenhall, Newmarket & all surrounding Villages

A collection & delivery service is available.

**For a professional & friendly service look no further & call Andy on
Landline: 01638 583959 or Mobile: 07587 503967
Email: autotechatc@gmail.com**

10% off Service & MOT for all Barton Mills residents

YOUR RELIABLE LOCAL ELECTRICIAN

**City &
Guilds**

**Lee Jardine
Electrical Services**



- All Domestic Electrical Work
- Rewires/New Installations
- New/replacement lights and sockets
- Electric Showers/Hobs and Ovens
- 24 Hour Emergency Call Out
- Landlords Compliance Certificates

5/25

Tel: 01284 361 986

Mob: 07444 272 472

Email: lee.jardine@outlook.com

S. V. COOK

Painting and Decorating Services

Over 35 years experience

For Commercial & Light Domestic
Interior and Exterior Decoration

Wallpapering Specialists

Free Quotes Available

Tel - 01638-716459

Mob - 07850 235876

Email - info@svcook.co.uk

Station Road, The Gables, Mildenhall IP28 7DR

10/25

10/25

DIGGER

Your Local Handyman
NO TIME FOR ANY OF THOSE DIY JOBS?
Home Property & Garden
For Fast Efficient Service
Ring David Taylor
Tel 01638-713294 or 07817 386765
Email handydigger@yahoo.co.uk

Space for your advert here.
See inside back page
for advertising rates

Village Hall *Registered Charity*

10/25



The Village Hall is available
for all your social functions.

To hire the Hall

contact

Mrs Sue Norton Tel 717040

KR. SHEEN ROOFING SERVICES

All aspects of roofing
REPAIRS/LEADWORK/CHIMNEYS
REPOINTED
MOSS REMOVAL/GUTTERING/GARDEN
MAINTENANCE
CHALK/FLINT WALL SPECIALIST
TEL 01638 510152
MOBILE 07867 568225

10/25

The Village Hall has available to hire
catering quality crockery and cutlery
(approx. 40 place settings).

For more information contact
Sue Norton Tel 717040

Village Hall
Registered Charity

Balmforth

Estate Agents, Valuers & Letting Agents

01638 711171

LOOKING TO SELL, BUY OR RENT A PROPERTY?

- OPEN 7 DAYS A WEEK
- NO OBLIGATION VALUATIONS
- NO SALE – NO FEE
- COMPETITIVE FEES
- 3D DIGITAL WALK THROUGH
- DRONE IMAGERY
- RENTAL OFFICE ADJACENT TO USAF LAKENHEATH
- RIGHTMOVE PREMIUM DISPLAY & FEATURED PROPERTY AS STANDARD
- MULTIPLE INTERNET LISTINGS
- SOCIAL MEDIA ADVERTISING

10/24

www.balmforth.co.uk

PODIATRIST/CHIROPODIST

SUE HART BSc (Hons), S.R.CH, M.Ch.S

20 years experience with High Risk patients including;

11/24

- ☐ Diabetics
- ☐ Rheumatoid Arthritis
- ☐ Peripheral Vascular Disease
- ☐ Corns/Callus
- ☐ Ingrown Toe Nails
- ☐ Thickened Toe Nails
- ☐ Gait Analysis/Biomechanics/Orthotics
- ☐ Footwear Advice
- ☐ Verrucas
- ☐ Fungal Infections
- ☐ Diabetic Advice and Treatments



Home visits. Daytime and evening appointments.

Home: 01638 555187 Mobile: 07710155409

E-mail: susie.harty@googlemail.com

4/26



UK Breaks
City Breaks
Ski Holidays
Airport Parking
Car Rental

Package Holidays
Cruises
Attractions
Lounges & Transfers
Travel Insurance

Contact Karen on
07825 159433

karenchurchill.1979@hotmail.com
ABTA P7384/ATOL protected



10/24



PARENT AND TODDLER GROUP

Mondays (Sch Term Time only)
10.00 to 11.30

Barton Mills Village Hall
£2.10 per family

For information call
Karen on
07912 645549

10/24

JOSEPH TWOMEY

**Furniture Restoration &
Finishing Specialist**
Antique - Modern - Reproduction
Caned Furniture French
Polishing
Sprayed Finishes
Interior & Exterior Finishes
City & Guilds Qualified
T: 01638 714717
M: 07963 357 184
Barton Mills, Bury St Edmunds

10/24

CG MOLE CATCHING

From residential gardens to large commercial sites, C G Mole Catching can provide the effective and efficient answer to your mole problem.

Registered with the BTMR, all work is fully insured, please contact
Ed Lubbock for details:

07910 019716
edward.lubbock@
btinternet.com

4/25

ALAN BUTCHER

Painter & Decorator
Established 1969

1 St Mary's View

Barton Mills

IP28 6FE

07788 535104

10/24

-VERY CLEAN-

N.C.S.

11/24



CHIMNEY & PLUMBING SERVICES

**YOUR LOCAL CHIMNEY SWEEP
WE'RE FRIENDLY & WE'RE CHEAP**

-BIRDS NESTS REMOVED

-OIL & GAS BOILERS

-SOLID FUEL, STOVE FITTED

-SMOKE PRESSURE TEST

-INSECT MESH, POTS, COWLS

-FLUE LINERS SUPPLIED & FITTED

-BIRD GUARDS & TERMINAL

FOR FREE QUOTE CALL ME ON

MOB:07824727277 TEL:(01638)662760

E-MAIL: NCS.NEWMARKET@YAHOO.CO.UK

www.ncsnewmarket.co.uk

- Competitive Prices -

***10% DISCOUNT
FOR ALL WORK!!**



7/25

**SWIFT
FOR
HEAT**

Domestic Gas Heating Engineers

www.swiftforheat.co.uk

Gas Boilers serviced and repaired.

Central heating breakdowns.

Landlord Gas safety inspections.

**25 Mace Road, Barton Mills,
Suffolk IP28 7FP**

T: 01638 715408

M: 07775 673366

E: graham@swiftforheat.co.uk



511652

Richard Fortey



**All aerial +
satellite
work**

Experienced

Local

Engineer

Tuning Tv

DVD etc.

10/24

01638 662119

No Call Out Charge

BARTON MILLER ADVERTISING RATES

<u>Commercial/Business</u>	Basic 1/8 page of A5	£25	Per annum
	¼ page of A5	£45	Per annum
	½ page of A5	£90	Per annum
	Whole page A5	£180	Per annum
<u>Organisations/Clubs etc</u>	Basic 1/8 th page of A5	£2.00	Per issue
	¼ page of A5	£4.00	Per issue
	½ page of A5	£7.50	Per issue
	Whole page A5	£15.00	Per issue

Depending on the content for some local items, some adjustments may be made. This is envisaged as being for "poster type" publicity for events.

Charity appeals not more than 5 lines of straight type - FREE. "Poster style" format - organisation rates apply.

Small Personal Adverts For Sale/Wanted etc. - £1 Lost/Found/Thank you - FREE

Any profits from advertising go to Church Funds

The Barton Miller

Editorial Team

take no responsibility for endorsement of, or statements made in published advertisements which are accepted in good faith. However we reserve the right to refuse any advertisement considered inappropriate for publication

SPECIAL NOTICE

If you are preparing any articles or advertisements for inclusion in the **BARTON MILLER** would you please submit, where possible, in **A5 format copy**. Please email the text (Word/Publisher.doc or pdf) and illustrations (JPEG) to **nancy@bartonmills.com** or **frances_lewis11@hotmail.com**

To keep proportions correct, fold an A5 sheet of paper in half 3 times to achieve minimum size. Many thanks.

PCSO ANN- MARIE POWELL
Safer Neighbourhood Team
Police Community Support Officer

Telephone 101





BUDDY SCHEME



The Parish Council would like to encourage participation in the initiative of a Buddy Scheme for those with a known heart condition or illness. The scheme encourages parishioners to buddy up with their neighbour(s) who could assist in getting help and retrieving the defibrillator in Bell Lane.

A defibrillator is a device that delivers an electric shock to the heart to restore a normal rhythm in cases of potentially fatal abnormal heart rhythms, such as ventricular tachycardia or ventricular fibrillation. It is crucial in treating sudden cardiac arrest, as it can help the heart start beating again when it has stopped. Defibrillators can be found in various forms, including automated external defibrillators (AEDs) for public use and implantable cardioverter defibrillators (ICDs) for patients at high risk. They can be life saving devices!